

the b nagoya

4-15-23 Sakae, Naka-ku, Nagoya-shi, Aichi 460-0008 Japan
 Tel: +81-52-241-1500 Fax: +81-52-264-1732
 nagoya@theb-hotels.com

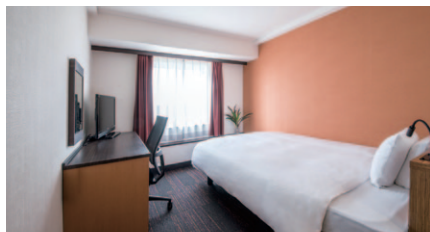
Access

Nagoya Subway Higashiyama line - Sakae Station: Exit 13 - 3-minute walk
 Nagoya station - 10 minutes by train

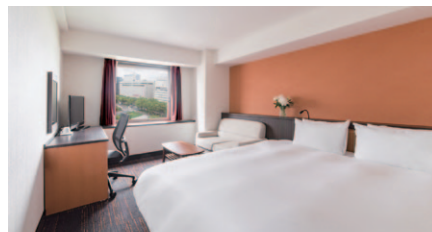
Guest Rooms

219 rooms
 Non smoking only
 Smoking Area - 3F

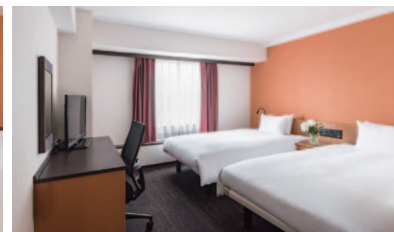
Check-in: 15:00
 Check-out: 11:00



Single 12 - 14m² 76 rooms (3 - 14F)



Double 14, 21m² 110 rooms (13 - 14F)



Twin 18 - 21m² 33 rooms (3 - 14F)

Located 10 minutes by train from Nagoya Station and 3 minutes on foot from Sakae Station, the b nagoya is an urban hotel that combines over 200 rooms with exhibition and conference spaces. In front of the hotel there is a vast sidewalk with Nagoya Oasis and Hisaya Odori Park in front of you, ideal for female guests and families to enjoy.

Breakfast

Aris Location:3F
 Opening hours: 7:00 - 10:00

Attractions

Nagoya Castle, Nagoya Dome, Legoland Japan,
 The Tokugawa Art Museum, Port of Nagoya Public Aquarium,
 The Museum Meiji-Mura, Nagoya City Science Museum,
 Toyota Commemorative Museum of Industry and Technology

Facilities

Free WiFi, Coffee Station (free), Net Station (free), Laundry Room,
 Ice Machine, Vending Machine, Smoking Area (3F)

Meeting and Conference 5 rooms (B1, 4, 12F)

	area (m ²)	height (m)	buffet	dinner	school	theater
Iris 3F	60	2.1~2.2	—	—	30	50
Camelia 3F	43	2.1~2.2	—	—	21	30
Sapphire 1F	55	2.4	—	—	36	50

*PC projector, screen, Free Wi-Fi and LAN Cable are available.