

the b shimbashi

1-17-13 Nishi-Shimbashi, Minato-ku, Tokyo 105-0003 Japan
 Tel: +81-3-3501-2500 Fax: +81-3-3501-2501
 shimbashi@theb-hotels.com

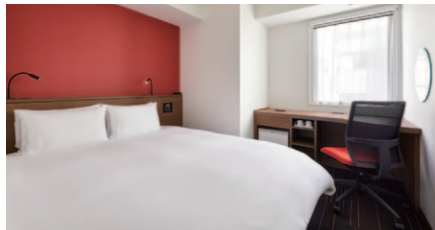
Access

Toei Mita line - Uchisaiwaicho Station: Exit A3 - 4 minute walk
 JP, Tokyo Metro, Toei Subway, Yurikamome
 - Shimbashi Station: Karasumori Exit - 6 minute walk
 Tokyo station - 20 minutes by train
 Shinagawa station - 25 minutes by train

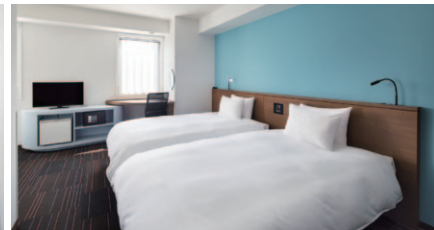
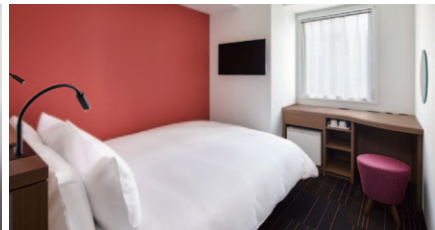
Guest Rooms

109 rooms
 Non smoking only
 Smoking Area 1F

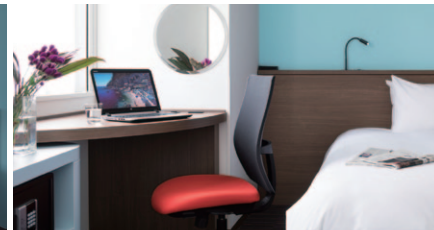
Check-in: 15:00
 Check-out: 11:00



Double 14-16m² 91 rooms (2 - 14F)



Twin 20-26m² 18 rooms (2 - 14F)



Located 4 minutes on foot from Uchisaiwasecho Station, the b shimbashi is an urban style hotel where you can experience quality relaxation while in the center of the city. Within walking distance you'll find hundreds of eateries in the vicinity of Shimbashi Station and one of the world's leading shopping districts in Ginza, as well as access to the city center waterfront.

Breakfast

Location: 1F
 Opening hours: 7:00 - 10:00

Attractions

Toranomon Hills, Shiodome Sio-site, Hamarikyu Gardens, Hibiya Park, Tokyo Imperial Palace, Kabuki-za, Tsukiji fish market, Tokyo Tower

Facilities

Free WiFi, Coffee Station (free), Net Station (free), Laundry Room, Ice Machine, Smoking Area (1F)